

blueart<sup>®</sup>  
art of tiles

RE  
MARK  
ABLE.

Lappato<sup>+</sup>  
*Collection*

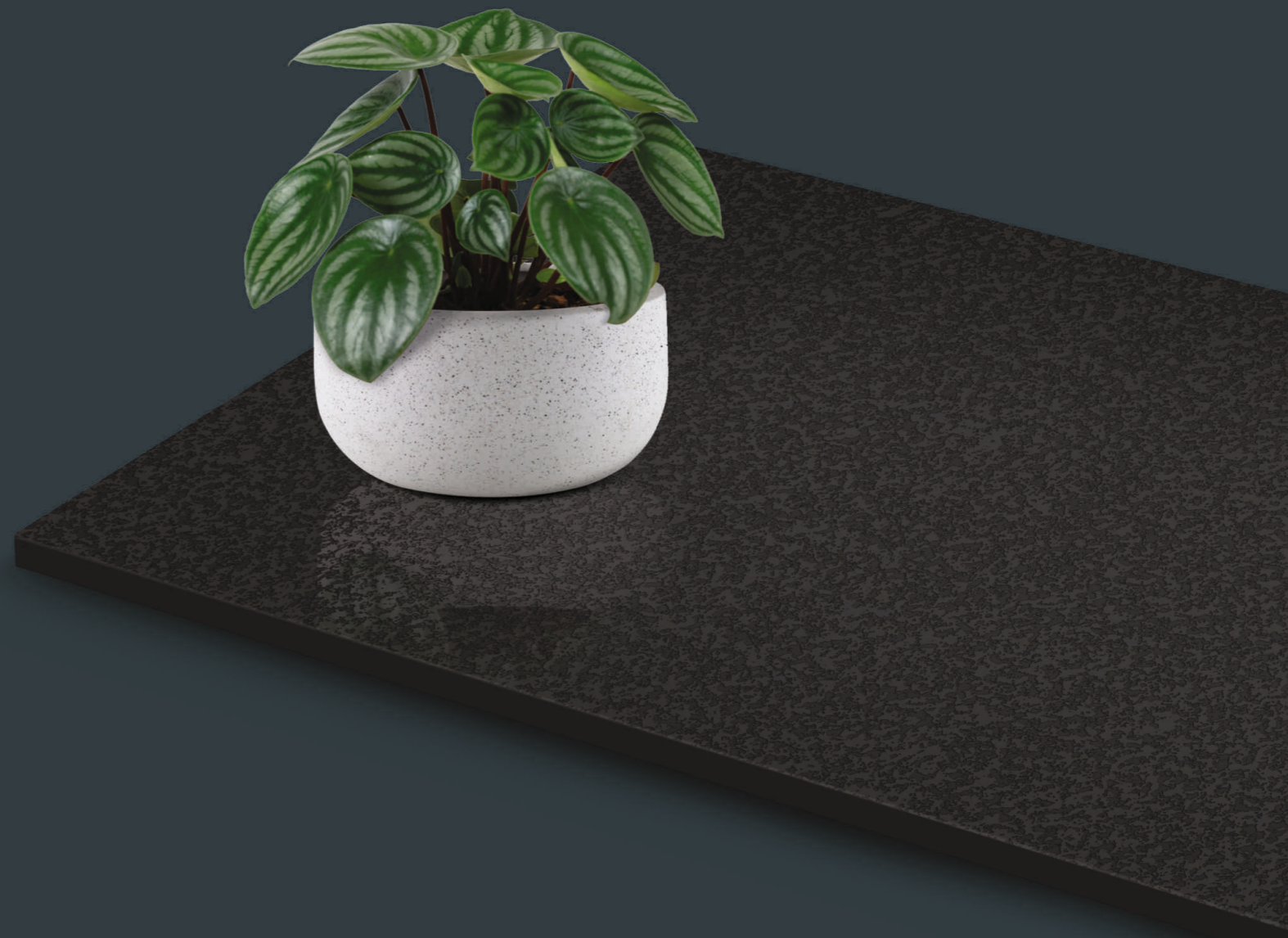
Surface That

*Reflect*

LU

XLU

R4

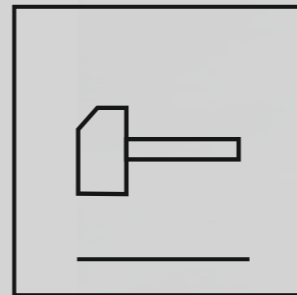
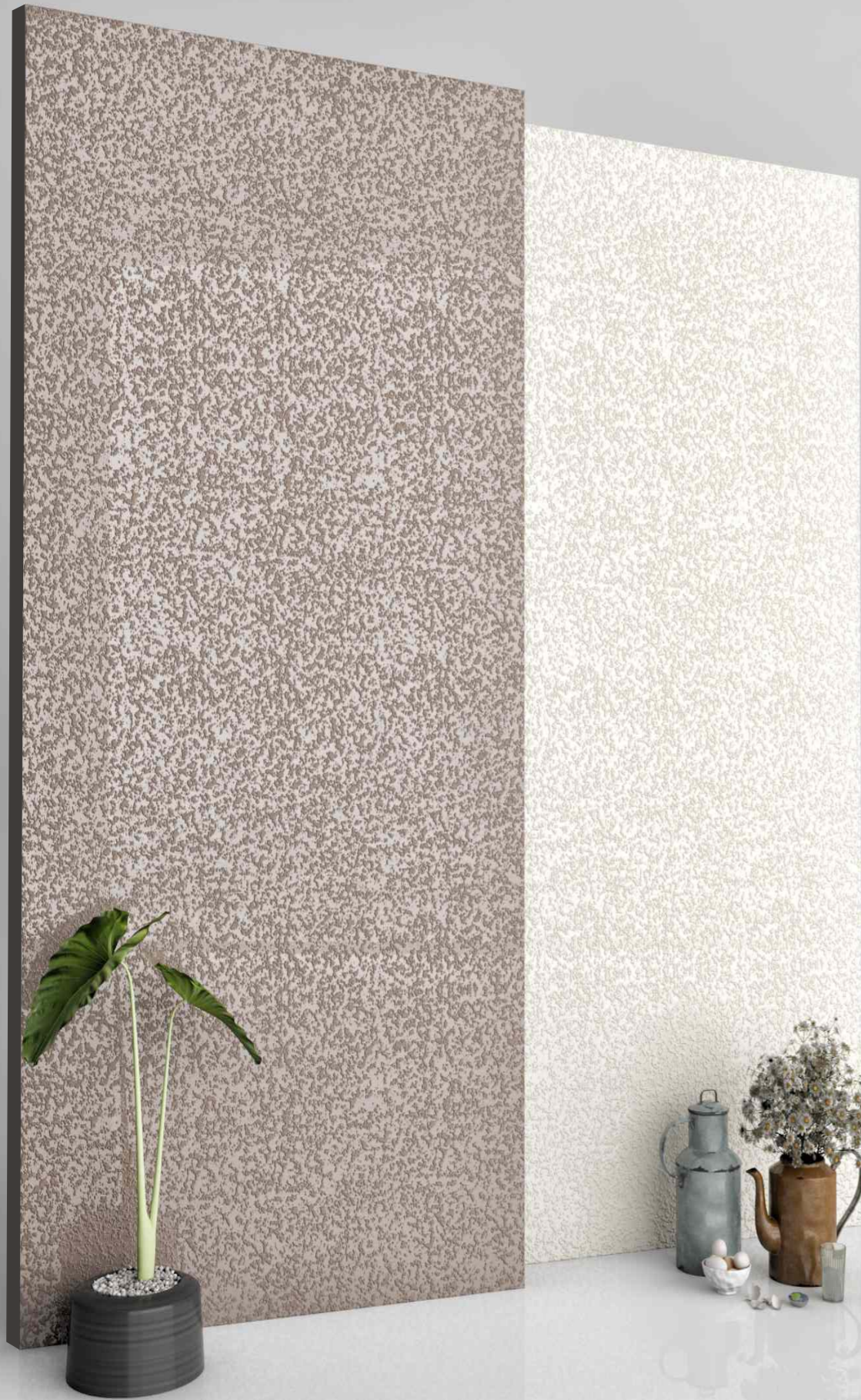


Solid, strong and uniform, it maintains its appearance even in the event of extreme wear and damage.



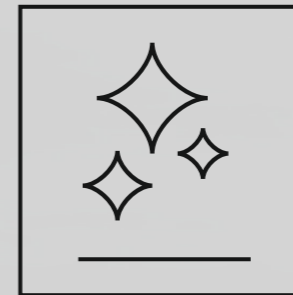






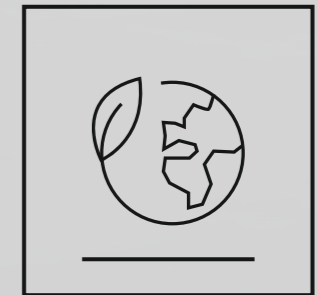
### **Solid**

Solid, strong and uniform, it maintains its appearance even in the event of extreme wear and damage.



### **Safe, Clean, Fireproof**

Sanitisable, resistant to acid, easy to clean, does not burn and does not release harmful substances



### **Highly Sustainable**

Porcelain stoneware reduced with maximum respect for the environment and for workers. Long-lasting





**RE  
MARK  
ABLE.**

## ABOUT US...

Blueart was founded in 2010. It manufactures products with a high technological content paying particular attention to the impact on the environment.

The company's added value is represented by the following international certifications: ISO 9001, ISO 14001, ISO 45001, CE.

### **Blueart the beating heart of cutting-edge technology since 2011.**

High quality combined with unrivalled technology has enabled us to re-interpret some of the rarest, most refined and valuable products of nature, while also enhancing their technical and qualitative properties, saving many of these materials from oblivion. In this way, Blueart allows you to appreciate and take full advantage of some of the most prized materials available. Other hallmarks include exceptional functionality, hygiene, safety and long-lasting durability. The concept of the material is new and constantly being developed upon in the search for ultimate quality.

Blueart technologies are unique: they are devised, designed and implemented directly in-house at the company's own sites,



**Preview Shown :** RICH BLACK ROCK | **Size :** 600 x 600 mm



**Preview Shown :**  
RICH BLACK DIAMOND  
& RICH BLACK

**Size :**  
600 x 1200 mm

**Finish :**  
Lappato





**Preview Shown :**  
RICH BLACK DIAMOND  
& RICH BLACK

**Size :**  
600 x 1200 mm

**Finish :**  
Lappato





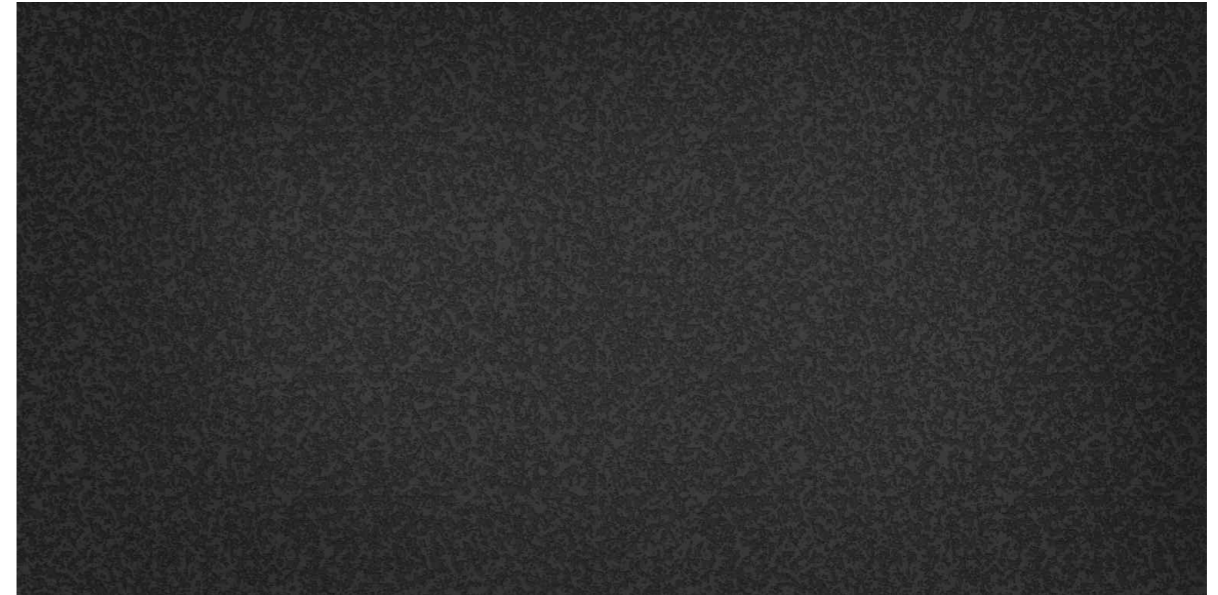
**RICH BLACK**

**S SPECIAL**  
series

Finish  
**Lappato**  
Collection

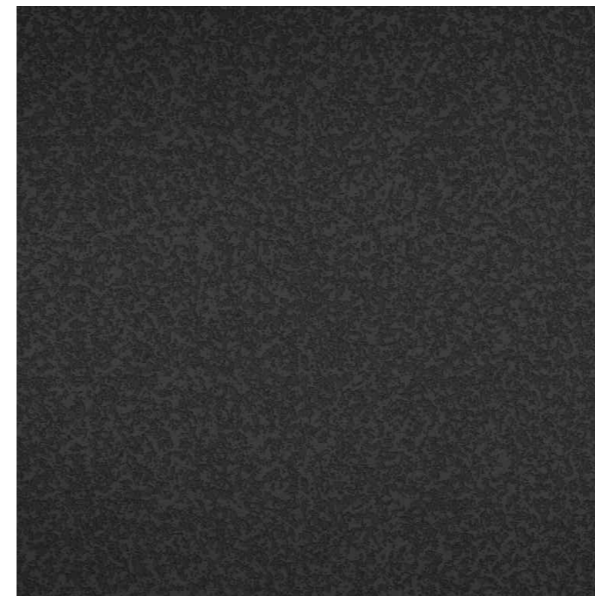
**RICH BLACK**  
DIAMOND

600 x 1200 mm | LAPPATO FINISH



**RICH BLACK**  
DIAMOND

600 x 600 mm | LAPPATO FINISH



**RICH BLACK**  
ROCK

600 x 600 mm | LAPPATO FINISH





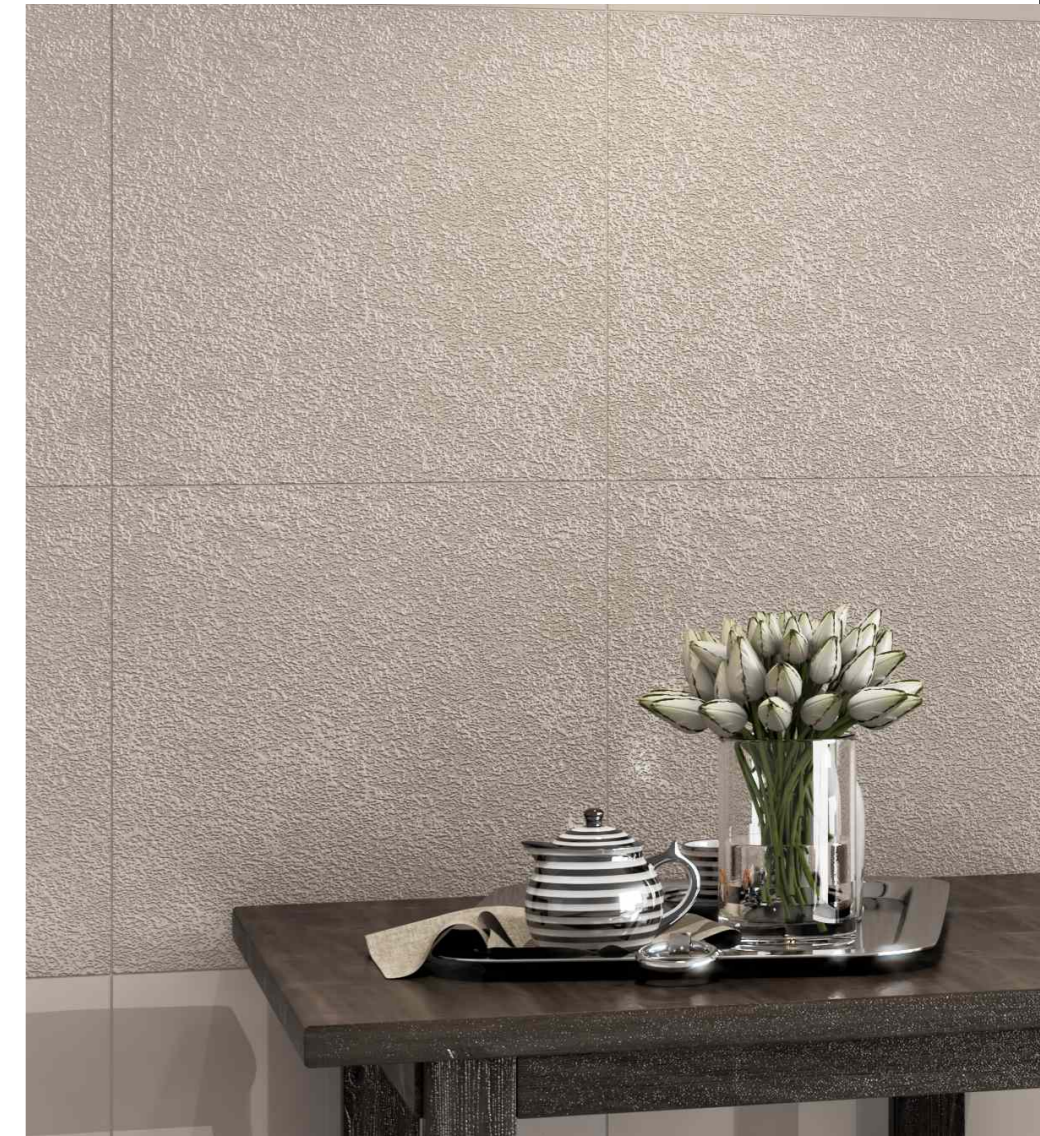
**Preview Shown :**  
COSMIC CREMA DIAMOND  
& COSMIC CREMA

**Size :**  
600 x 1200 mm

**Preview Shown :**  
COSMIC CREMA ROCK  
& COSMIC CREMA

**Size :**  
600 x 600 mm

**Finish :**  
Lappato

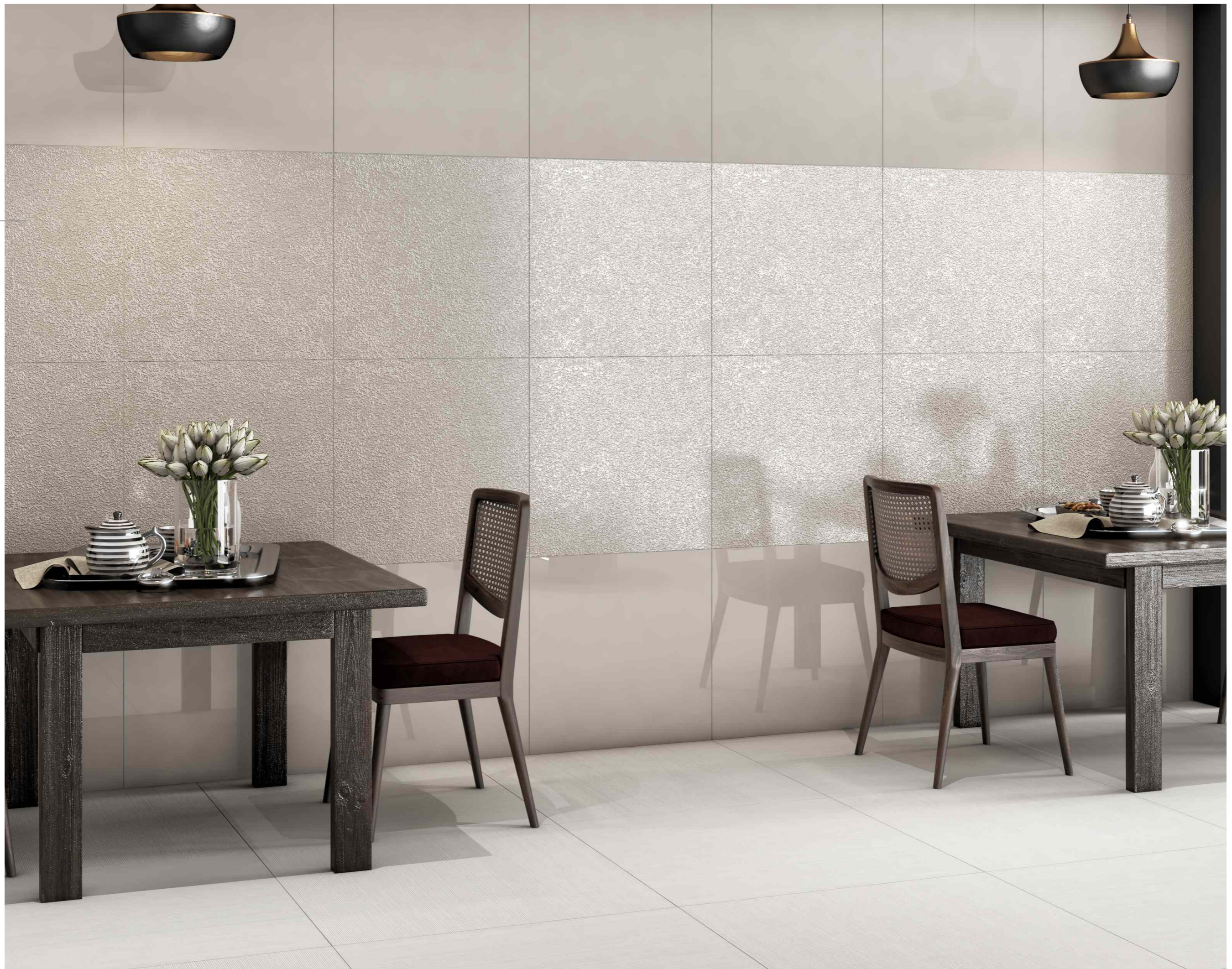




**Preview Shown :**  
COSMIC CREMA ROCK  
& COSMIC CREMA

**Size :**  
600 x 600 mm

**Finish :**  
Lappato





COSMIC CREMA

**LIGHT**  
series

Finish  
**Lappato**  
*Collection*

**COSMIC CREMA**  
DIAMOND



**600 x 1200 mm | LAPPATO FINISH**

**COSMIC CREMA**  
DIAMOND



**600 x 600 mm | LAPPATO FINISH**

**COSMIC CREMA**  
ROCK



**600 x 600 mm | LAPPATO FINISH**



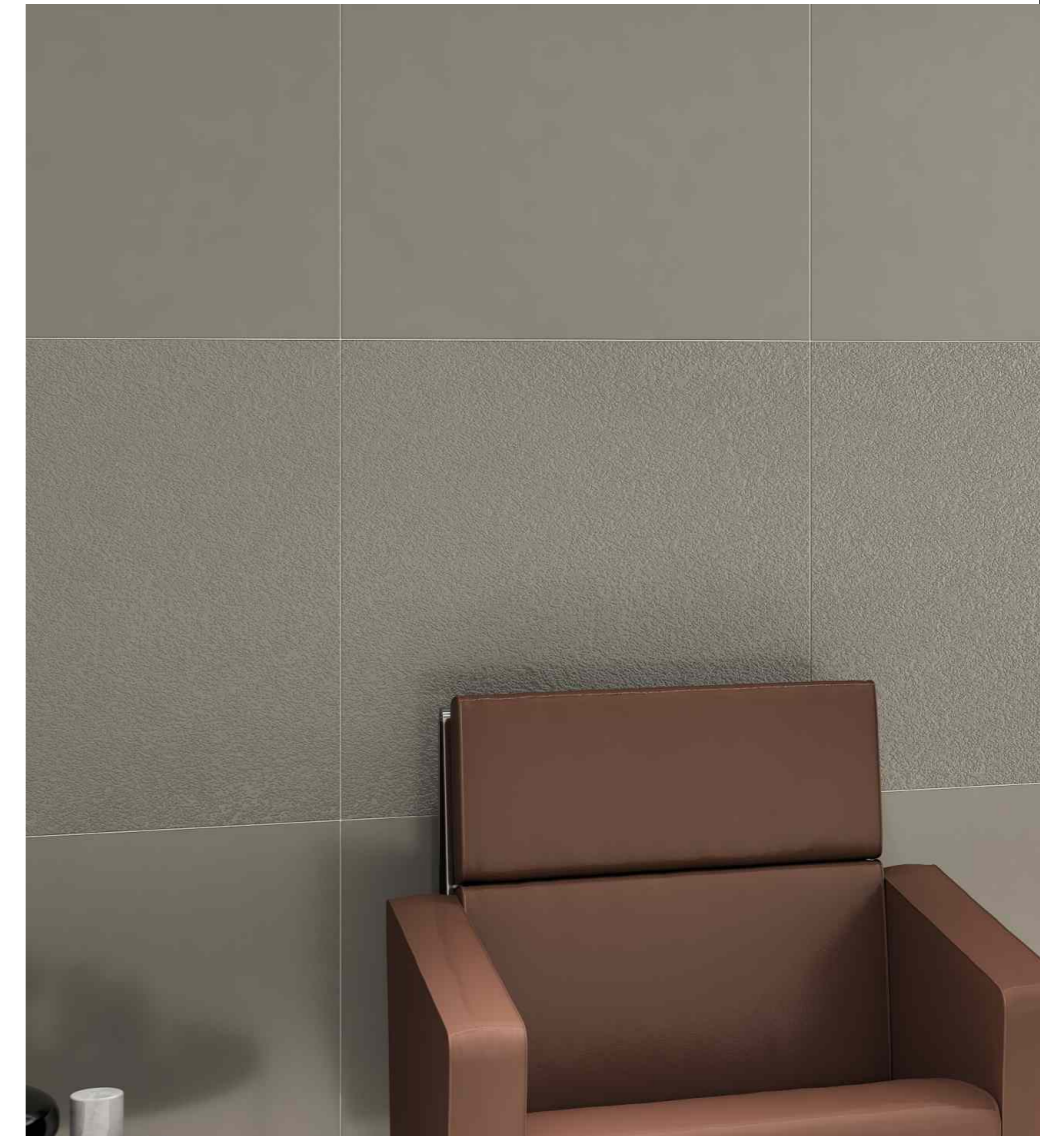
**Preview Shown :** | **Size :**  
SLATE GREY DIAMOND | 600 x 1200 mm  
& SLATE GREY



**Preview Shown :**  
SLATE GREY ROCK  
& SLATE GREY

**Size :**  
600 x 600 mm

**Finish :**  
Lappato





**Preview Shown :**  
SLATE GREY ROCK  
& SLATE GREY

**Size :**  
600 x 600 mm

**Finish :**  
Lappato





SLATE GREY

**LIGHT**  
series

Finish  
**Lappato**  
*Collection*

**SLATE GREY**  
DIAMOND



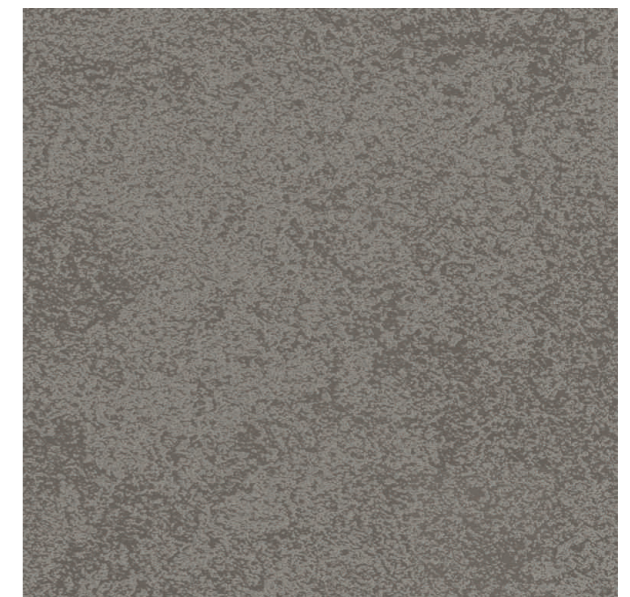
**600 x 1200 mm | LAPPATO FINISH**

**SLATE GREY**  
DIAMOND



**600 x 600 mm | LAPPATO FINISH**

**SLATE GREY**  
ROCK



**600 x 600 mm | LAPPATO FINISH**



**Preview Shown :** | **Size :**  
STEEL GREY Diamond | 600 x 1200 mm  
& STEEL GREY



**Preview Shown :**  
STEEL GREY ROCK  
& STEEL GREY

**Size :**  
600 x 600 mm

**Finish :**  
Lappato





**Preview Shown :**  
STEEL GREY ROCK  
& STEEL GREY

**Size :**  
600 x 600 mm

**Finish :**  
Lappato





STEEL GREY

**LIGHT**  
series

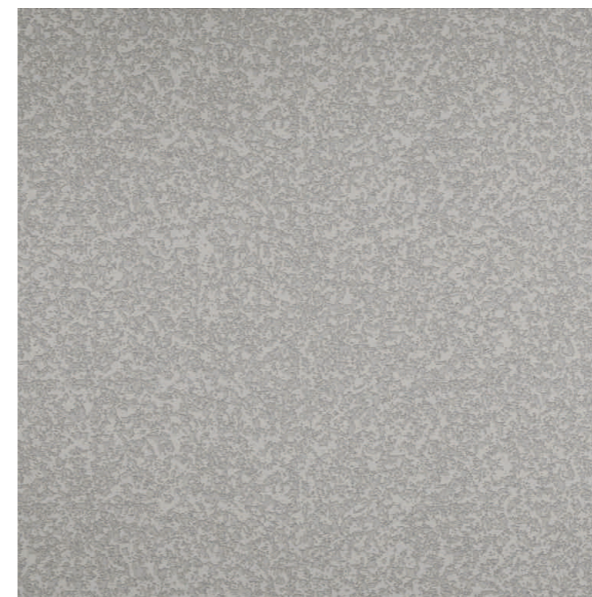
Finish  
**Lappato**  
*Collection*

**STEEL GREY**  
DIAMOND



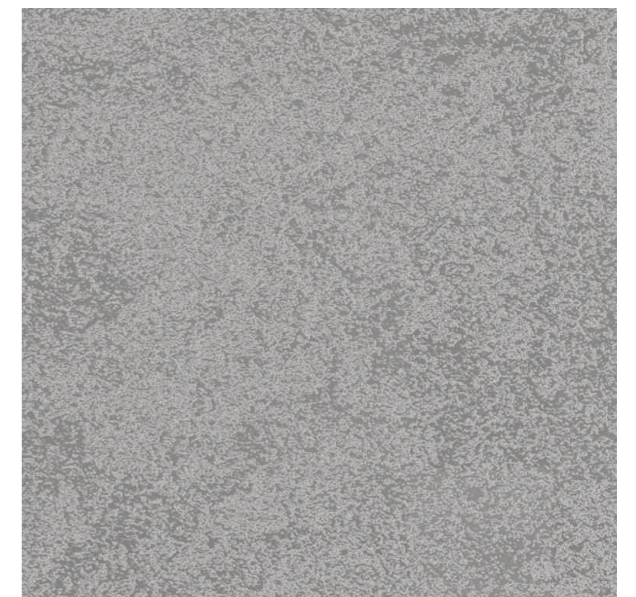
**600 x 1200 mm | LAPPATO FINISH**

**STEEL GREY**  
DIAMOND



**600 x 600 mm | LAPPATO FINISH**

**STEEL GREY**  
ROCK



**600 x 600 mm | LAPPATO FINISH**



**Preview Shown :** | **Size :**  
SILK ROUTE DIAMOND | 600 x 1200 mm  
& SILK ROUTE



**Preview Shown :**  
SILK ROUTE ROCK  
& SILK ROUTE

**Size :**  
600 x 600 mm

**Finish :**  
Lappato





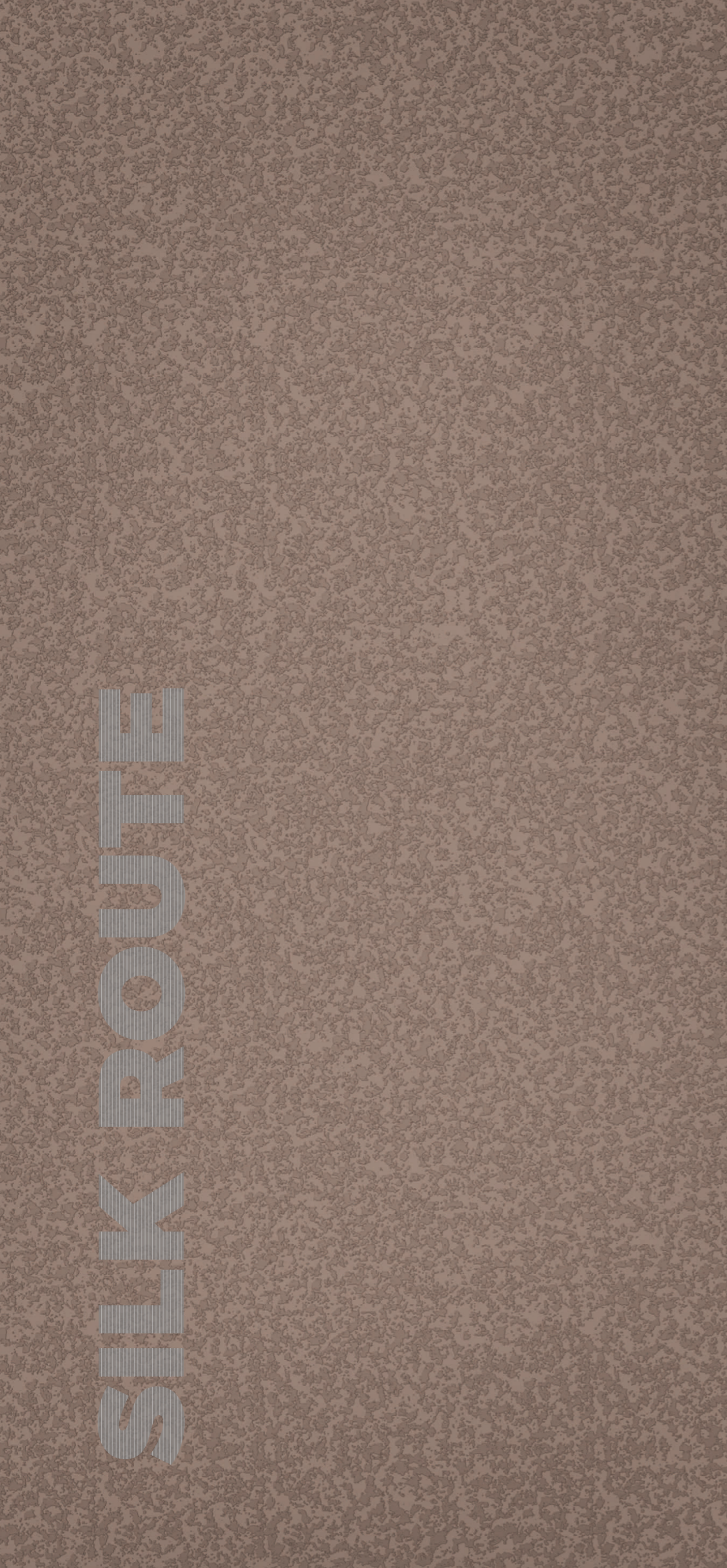
**Preview Shown :**  
SILK ROUTE ROCK  
& SILK ROUTE

**Size :**  
600 x 600 mm

**Finish :**  
Lappato





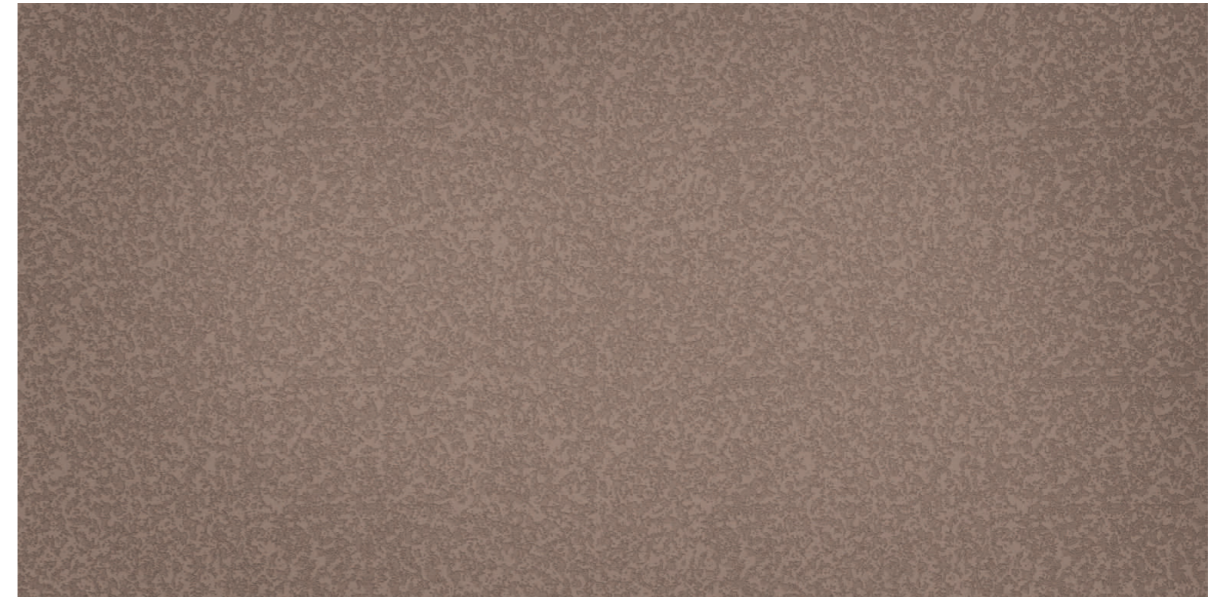


SILK ROUTE DIAMOND

**LIGHT**  
series

Finish  
**Lappato**  
*Collection*

**SILK ROUTE**  
DIAMOND



600 x 1200 mm | LAPPATO FINISH

**SILK ROUTE**  
DIAMOND



600 x 600 mm | LAPPATO FINISH

**SILK ROUTE**  
ROCK



600 x 600 mm | LAPPATO FINISH



Finish  
**Lappato**  
Collection

**Preview Shown :**  
AUTHENTIC WHITE DIAMOND  
& AUTHENTIC WHITE

**Size :**  
600 x 1200 mm

**blueart**<sup>®</sup>  
art of tiles



**Preview Shown :**  
AUTHENTIC WHITE ROCK  
& AUTHENTIC WHITE

**Size :**  
600 x 600 mm

**Finish :**  
Lappato





**Preview Shown :**  
AUTHENTIC WHITE ROCK  
& AUTHENTIC WHITE

**Size :**  
600 x 600 mm

**Finish :**  
Lappato



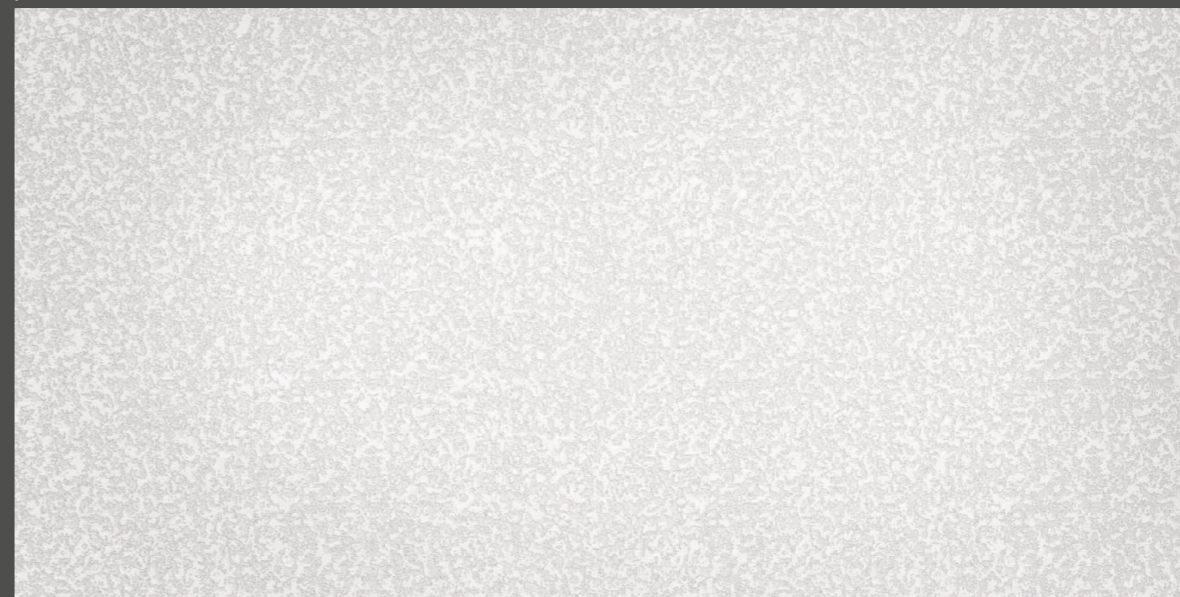


**AUTHENTIC WHITE**

**SPECIAL**  
series

Finish  
**Lappato**  
*Collection*

**AUTHENTIC WHITE**  
DIAMOND



600 x 1200 mm | LAPPATO FINISH

**AUTHENTIC WHITE**  
DIAMOND



600 x 600 mm | LAPPATO FINISH

**AUTHENTIC WHITE**  
ROCK



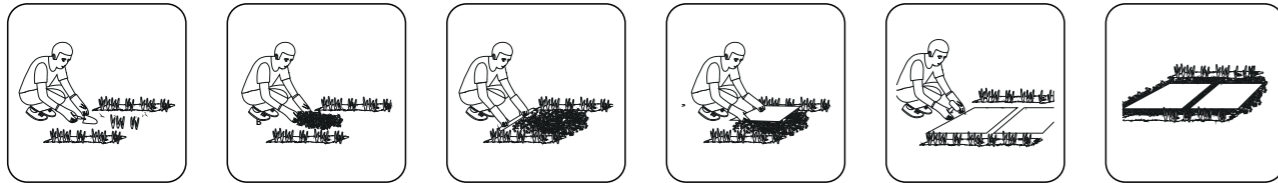
600 x 600 mm | LAPPATO FINISH



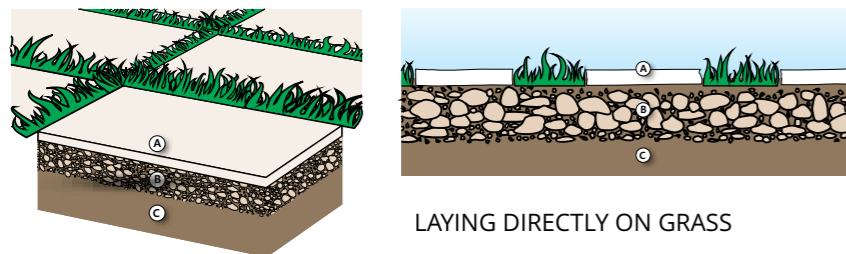
## Direct Installation On Grass

Ideal for: Gardens, gazebos, walkways.

- 1- Remove the soil below the area where the sheet will be laid to a thickness of about 5-6 cm
- 2- apply gravel to a thickness of about 3-4 cm and compact the foundation
- 3- Rest the sheets - with at least 1 cm of gap - on the gravel bed and use a rubber hammer to eliminate any unevenness.

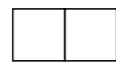


## Installation On Gravel And Sand

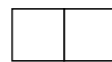


LAYING DIRECTLY ON GRASS

Laying With Close Joints



Laying With Close Joints

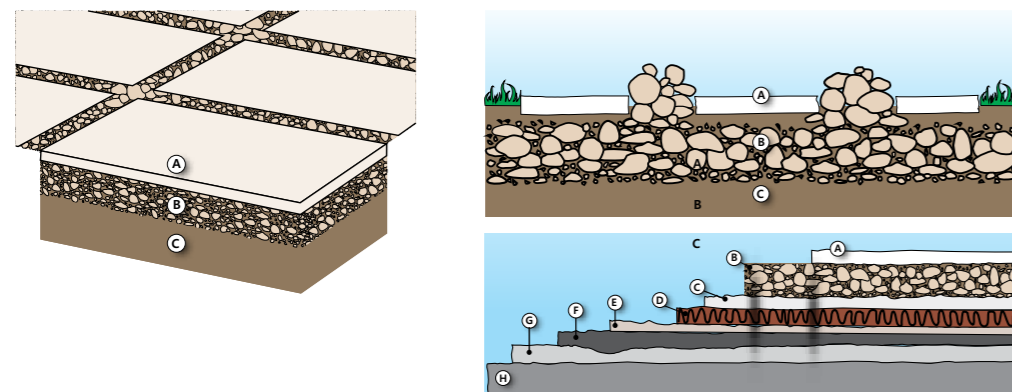


- A. Tile
- B. Fine gravel or sandy laying bed
- C. Ground

## Installation On Gravel And Sand

Ideal for: gardens, patios, courtyards, pedestrian walkways, beach resorts, perimeter areas in pools.

- 1- Compact the level of the resting layer (sand or gravel)
- 2- Lay the sheet on the bed of gravel or sand, maintaining a minimum gap of 1 cm or wider
- 3- Use a rubber hammer to eliminate any unevenness
- 4- Fill in the joints between the sheets with gravel or sand to provide greater stability to the surface



- A. Tile
- B. Fine gravel or sandy laying bed
- C. Concrete screed (may include electro welded mesh)
- D. Reinforcement layer
- E. Concrete screed
- F. Loose stone foundation (gravel)
- G. Soil

## TECHNICAL SPECIFICATION

TECHNICAL DETAILS	STANDARD AS PER ISO-13006/EN176 GROUP BIa	MEAN VALUE OF OUR FULL BODY VITRIFIED TILES	METHOD OF TEST
Deviation In Length & Width	±0.60%	±0.10%	ISO-10545-2
Deviation In Thickness	±5.00%	±2.00%	ISO-10545-2
Straightness Of Sides	±0.50%	±0.10%	ISO-10545-2
Rectangularity	±0.60%	±0.10%	ISO-10545-2
Surface Flatness	±0.50%	±0.10%	ISO-10545-2
Glossiness	Gloss Meter	Min. 90%	Glossmeter
Water Absorption	≤0.50%	E≤0.05%	ISO-10545-3
Breaking Strength	1300 N	2000 N	ISO-10545-4
Abrasion Resistance	Max. 175mm <sup>3</sup>	Max. 145mm <sup>3</sup>	ISO-10545-6
Moh's Hardness	Min. 6	≥ 6*	EN 101
Frost Resistance	Frost Proof	Frost Proof	ISO-10545-12
Thermal Shock	No Damage	No Damage	ISO-10545-9
Moisture Expansion	Nil	Nil	ISO-10545-10
Thermal Expansion	<9x10 <sup>-6</sup>	≥ 6 x 10 <sup>-6</sup>	ISO-10545-8
Resistance of House Hold Chemical	No Damage	No Damage	ISO-10545-13
Stain Resistance	Resistance	Resistance	ISO-10545-14
Slip Resistance (friction Co Efficient)	> 0.40	> 0.40	ISO-10545-17

**DISCLAIMER :** Icon reserves the right to delete & amend either totally or partially, any of the colors, shapes, sizes, references and other technical specifications contained in this catalogue at anytime. The colors of tiles shown in this catalogue are purely illustrative and limited to printing process. Please refer actual sample before final selection. The details of sizes, colors and references should be verified for typographical errors.

## PACKING DETAILS

	SIZE	Pcs. / Box	Weight / Box (Approx.)		Coverage Area / Box	
			Polished	Matt		
<b>FULL BODY</b>	600 x 1200 mm	2 pcs.	27 Kg	29 Kg	15.5 / Sq. Feet	1.44 / Mtr <sup>2</sup>
	600 x 600 mm	4 pcs.	26 Kg	28 Kg	15.5 / Sq. Feet	1.44 / Mtr <sup>2</sup>
<b>STEP</b>	300 x 1200 mm	3 pcs.	23 Kg	24 Kg	11.63 / Sq. Feet	1.08 / Mtr <sup>2</sup>
	300 x 900 mm	4 pcs.	22 Kg	23 Kg	11.63 / Sq. Feet	1.08 / Mtr <sup>2</sup>
<b>RISER</b>	200 x 1200 mm	3 pcs.	14 Kg	15 Kg	7.75 / Sq. Feet	0.72 / Mtr <sup>2</sup>
	200 x 900 mm	4 pcs.	16 Kg	17 Kg	7.75 / Sq. Feet	0.72 / Mtr <sup>2</sup>





**BLUEART GRANITO PVT. LTD.**

Paneli Road, 8-A, National Highway,

Nr. Dariyalal Resort, Morbi - 363 642 (Guj. INDIA.)

C : +91 - 89800 00211

+91 - 89800 00215

E : sales@blueart.in

bhavesh@blueart.in

**Export Inquiry**

C : +91 - 89804 75947

+91 - 89800 00604

E : expo@blueart.in